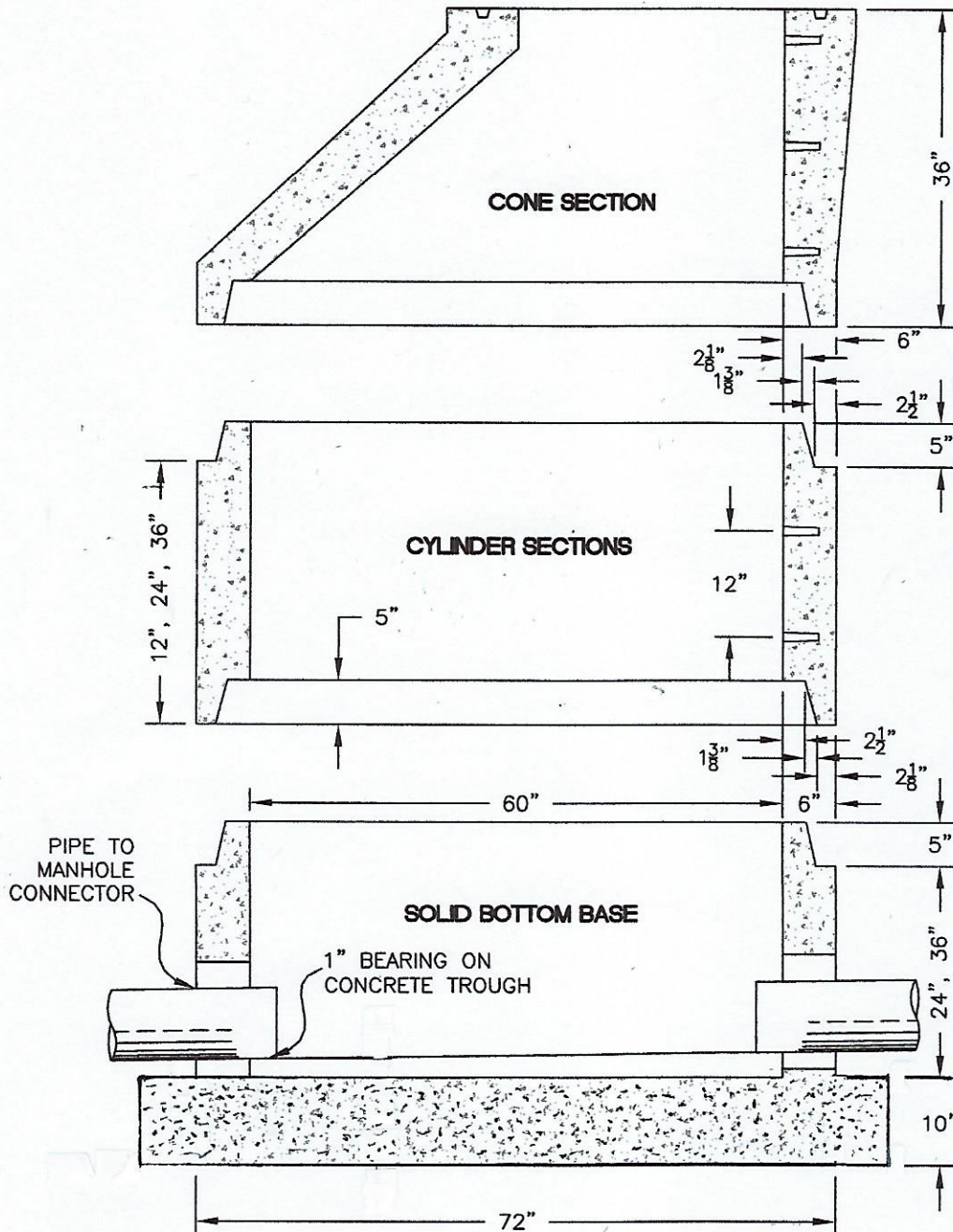


60" ID MANHOLE ASSEMBLY



NOTES:

1. ALL CONCRETE, REINFORCING, STEPS AND SEALANT SHALL MEET OR EXCEED ASTM C-478 SPECIFICATIONS.
2. CONCRETE COMPRESSIVE STRENGTH SHALL BE 4000psi MINIMUM.
3. PIPE TO MANHOLE CONNECTOR MEETS OR EXCEEDS ASTM C-923 SPECIFICATION.