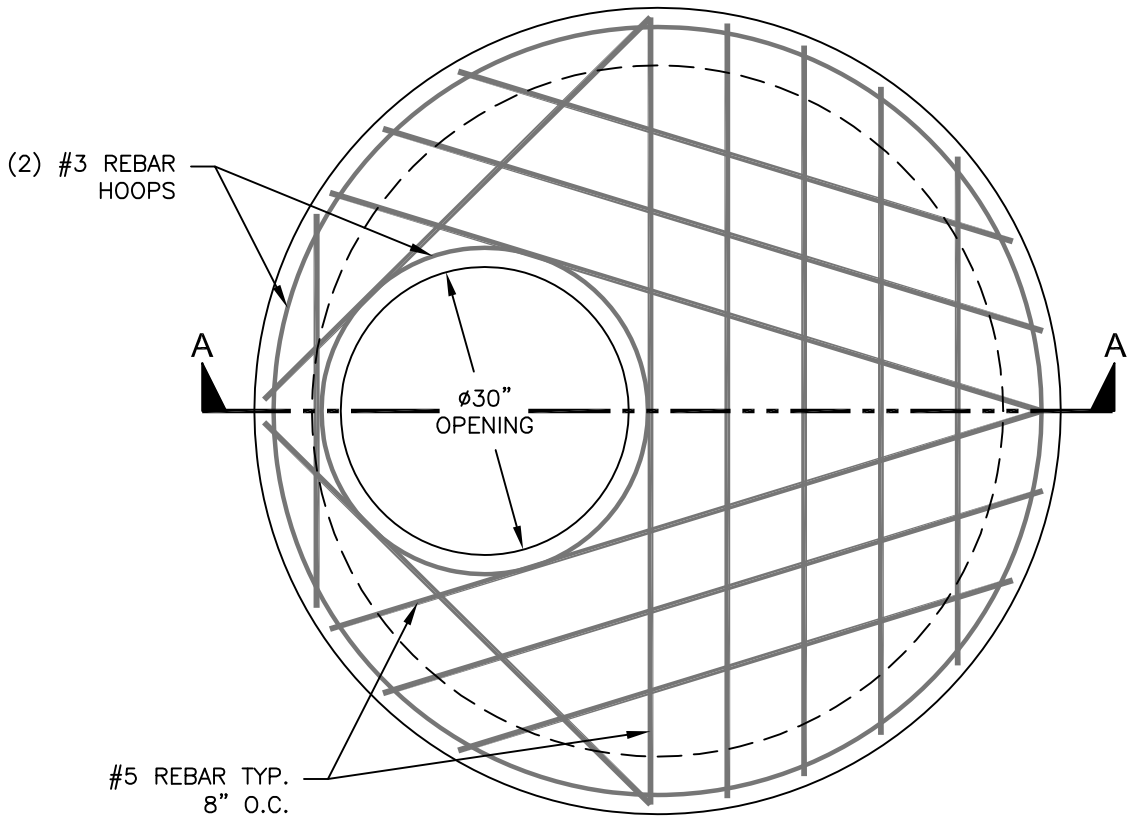
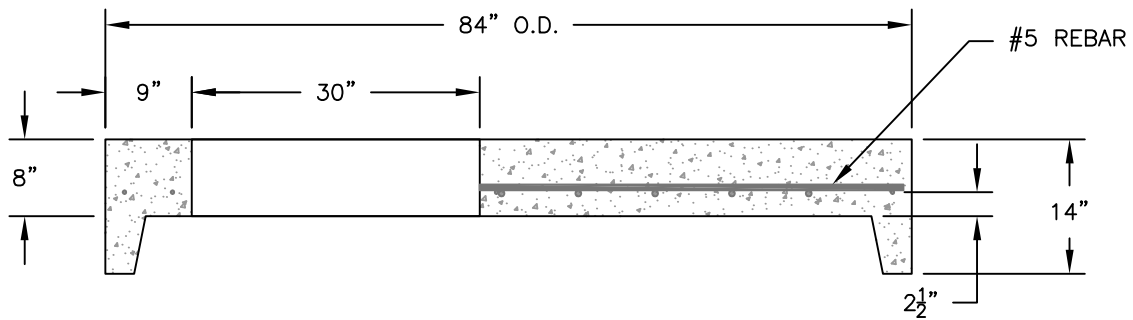


72" ID x 30" OPENING
 FLAT-TOP MANHOLE



TOP VIEW



Section A - A'
 SIDE VIEW

NOTES:

1. ALL CONCRETE, REINFORCING, STEPS AND SEALANT SHALL MEET OR EXCEED ASTM C-478 SPECIFICATIONS.
2. CONCRETE COMPRESSIVE STRENGTH SHALL BE 4000psi MINIMUM.